



NIENT'ALTRO CHE TE

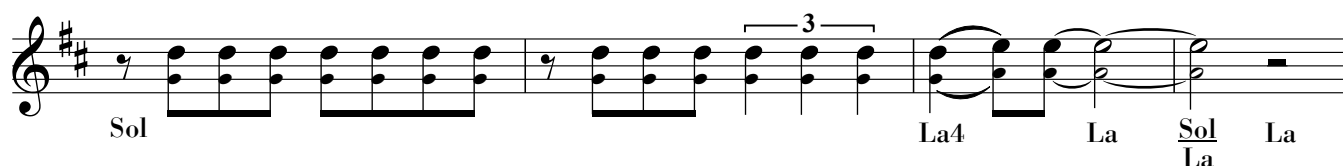
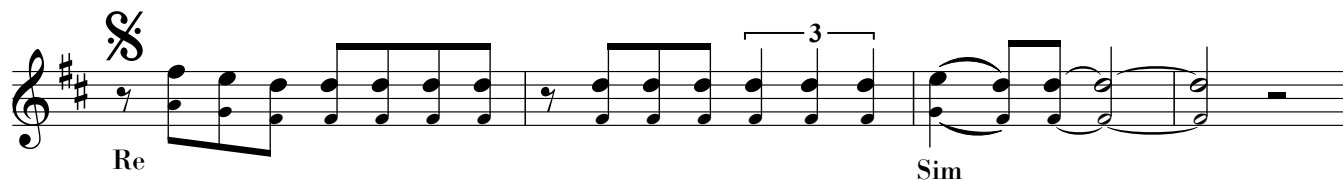
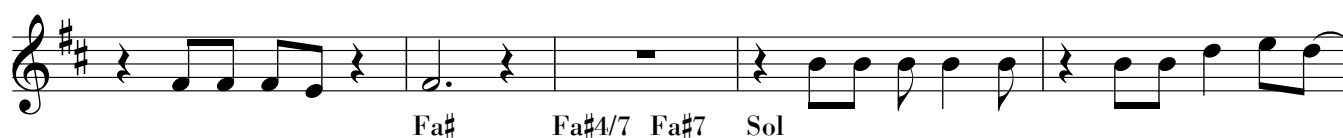
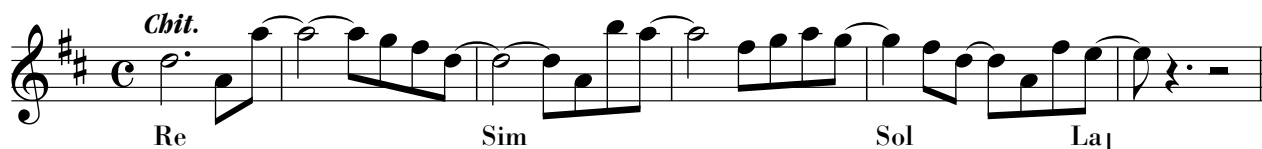
Testo di
S. DELNEVO

MODERATO BEAT (VERSIONE UOMO)

STRUMENTI in DO

Musica di
S. DELNEVO - P. GALASSI
E. CAMMARONE - M. VERONI
S. TARASCONI

Moderato beat



Re Sim

Sol La7 Re

Sim Re

Fa#4 Fa# Fa#4 Fa# Sol Re

Sol La4 La *Dal Segno al Theta poi Segue*

Segue Re Sib7 Mib

Dom Lab

Canto
Sib4 Sib $\frac{\text{Lab}}{\text{Sib}}$ Sib Mib

Dom Lab Sib Mib

(Chit.)
Lab Sib Mib